

STONE



Chequers Lane KT20

£665,000

*“At Stone, we’re passionate about
the unique and awe-inspiring
architectural elements that transform
houses into dream homes.”*

The Stone Family



Tucked quietly along Chequers Lane, in the ever-popular Surrey village of Walton on the Hill, Chequers Cottage is a charming home which offers a way of life that feels both considered and comforting — the sort of place where days unfold gently and evenings are something to be savoured. It is a house that does not shout for attention, but instead reveals its character slowly, rewarding those who appreciate light, texture and a sense of calm continuity throughout.

Inside, you are welcomed directly into the kitchen, the true heartbeat of the home. Here, crisp white cabinetry creates a fresh, timeless backdrop, perfectly balanced by deep black quartz worktops that add both drama and practicality. A traditional butler's sink sits proudly in place, lending a subtle nod to classic country living while remaining entirely suited to modern life. This is a kitchen designed for real use — from leisurely weekend breakfasts to impromptu supper with friends — yet it never loses its quiet elegance. To one side, thoughtfully tucked away, the downstairs WC and utility room ensure everyday necessities are neatly concealed, allowing the main spaces to remain uncluttered and serene.



From the kitchen, the cottage opens into the principal reception and dining space, and it is here that the home truly comes into its own. Bathed in natural light thanks to conservatory-style glazing, the room feels uplifting and airy throughout the year. Sunlight pours in during the day, shifting gently across the floor, while views of the garden beyond create a constant connection with the outdoors. Despite the abundance of glass and light, the space retains an enveloping warmth. A log-burning stove forms a natural focal point, promising cosy winter evenings spent fireside, with the quiet crackle of logs and the glow of flame adding both comfort and atmosphere. The décor remains deliberately neutral and soothing, providing a calm canvas that allows furniture, artwork and personal touches to take centre stage.

Upstairs, the mood is one of restful retreat. Two beautifully presented double bedrooms are thoughtfully proportioned and filled with natural light, each offering a sense of tranquillity that encourages rest and relaxation. These are rooms that feel equally suited to slow mornings and early nights, their simplicity lending itself effortlessly to a range of styles. The family bathroom is both practical and indulgent, featuring a separate walk-in shower alongside a generous bath — ideal for busy weekday routines as well as long, restorative soaks at the end of the day.

Outside, the garden is a delightful surprise. Impressively long, it draws the eye down its length, offering a sense of depth and privacy that is increasingly rare. There is ample opportunity for planting, entertaining or simply enjoying the changing seasons, whether with a morning coffee or an evening glass of wine. At the far end of the garden sits a charming Wendy house, adding a touch of storybook charm and a sense of possibility — a child's hideaway, a creative retreat, or simply a playful feature that brings joy to the space.







Walton on the Hill is one of Surrey's most quietly distinguished villages, celebrated for its rich history, village-centred lifestyle and proximity to some of the county's most beautiful landscapes. With its handsome period buildings, traditional green and gently winding lanes, the village has an enduring charm that feels both authentic and unspoilt. Life here moves at a reassuringly civilised pace, shaped by long-standing local traditions and a strong sense of belonging.

At the heart of the village is a thoughtful mix of independent shops, welcoming cafés and well-regarded public houses, all of which encourage a sociable, walkable way of life. There is a particular emphasis on quality rather than quantity — from artisan produce to friendly service — giving the village a distinctly curated feel. Seasonal events and local gatherings further strengthen the community spirit, making Walton on the Hill as engaging as it is picturesque.

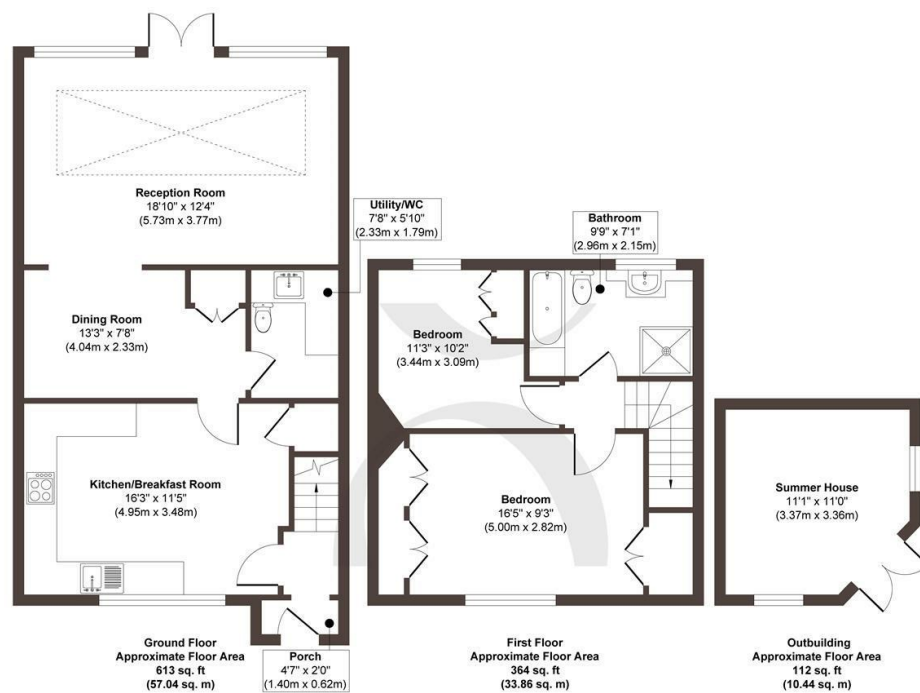
Surrounded by open countryside yet never isolated, the village enjoys immediate access to Walton Heath, Banstead Downs and the rolling North Downs, offering year-round opportunities for walking, cycling and outdoor leisure. This balance of rural beauty and everyday practicality has long made Walton on the Hill a coveted address, appealing to those seeking a refined village lifestyle within easy reach of London and the wider Surrey landscape.

Despite its peaceful setting, the location is exceptionally well connected. Nearby stations such as Tadworth and Kingswood provide direct rail services into London, making commuting both straightforward and efficient. Road links are equally convenient, with the M25 and A217 close at hand, ensuring easy access to the wider Surrey countryside, Gatwick Airport and beyond.









Approx. Gross Internal Floor Area 1089 sq. ft / 101.34 sq. m

Illustration for identification purposes only, measurements are approximate, not to scale.

Produced by Elements Property

Produced by Elements Property

STONE

The Details

- Private driveway providing off-street parking for two vehicles
- Cosy log-burning stove creating a warm focal point
- Two beautifully presented double bedrooms
- Long rear garden offering excellent depth
- Blend of period-inspired features and modern comfort
- Surrounded by open countryside and green spaces
- Popular Surrey village location
- A cottage offering both village charm and connectivity
- Charming and well-presented home with timeless appeal

Size
Approx 1089.00 sqft

Energy Performance Certificate (EPC)
Rating TBC

Council Tax Band
E



STONE

Let's *Talk*

01737 301 557

hello@stoneestateagents.co.uk

stoneestateagents.co.uk

The particulars above are a guide, not an offer or contract. Descriptions photographs and plans are not statements or representations of fact. Measurements are approximate and not to scale. Prospective purchasers must verify the accuracy of the information within the particulars. Stone does not give any representations or warranties; nor represent the Seller legally. Stone has no liability, for any costs, losses or expenses incurred by the Seller or a prospective buyer relating to the sales and buying transaction. Our Sales Disclaimer, trading names and privacy policy on how your data is processed and used is found in full on our website in our Privacy Statement.

© Stone Estate Agents 2023 All rights Reserved